



XCMG FOR YOUR SUCCESS

# XC760K

Skid Loader EU Stage V



**XCMG Construction Machinery Co., Ltd.**

Address: NO.99 North Kunpeng Road, Xuzhou Economic Development Zone, Jiangsu, China 221004  
Tel: +86-51687560288 FAX: +86-51683111363 E-mail: sales@xcmg.com Website: http://www.xcmg.com

## Introduction of Overall Advantages

- With strong power and rich attachments, the XCMG skid-steer loader can better adapt to the operations in narrow space and is an ideal tool for road construction, municipal maintenance, port handling, garden maintenance, and pasture production, featuring low operation cost and remarkable economic benefits.

## Strong and Efficient Power Transmission System

- The renowned brand engine equipped features strong power, ultra-low emission, and higher fuel efficiency.



- The static hydraulic drive technology adopted features stable drive and high efficiency and reliability.



- The fully-sealed sprocket case and high strength chains feature automatic lubrication and maintenance-free.

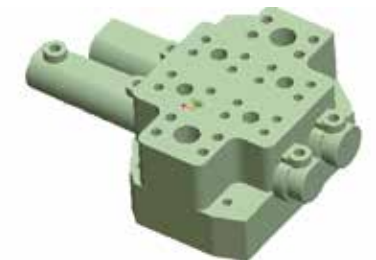


## Solid and Reliable Design

- The integral frame adopted features compact structure and high firmness and reliability. All critical structural parts are optimized through finite element analysis to realize reasonable stress distribution.



- The international first-class quality hydraulic units adopted feature high reliability, energy-saving, and high efficiency.



## Flexible Operations

- The bucket can automatically maintain level status during lifting to prevent scattering of material and improve working efficiency.
- Compact structure, low turning radius, and strong site adaptability.
- The quick-change coupling equipped can change attachments rapidly in the construction site.





## Incomparable Multi-Functionalities

- The international interchangeable quick-change coupling enables the change of tens of attachments, including sweeper, planer, breaking hammer, and ditcher, rapidly and conveniently.



Closed sweeper

Overall width	mm	2210
Working width	mm	1738
Brush diameter	mm	660
Brush material	Wire and nylon combined	
Storage capacity	m <sup>3</sup>	0.55
Motor displacement	ml/r	310
Traveling speed of machine	Km/h	< 5
Flow range	Lpm	60-140
Weight	kg	535



Inclined sweeper

Overall width	mm	2095
Working width	mm	1828
Brush diameter	mm	660
Brush material	Wire and nylon combined	
Number of brushes		40±2
Weight	kg	441



Planer

Milling width	mm	460 (Standard)600
Maximum milling depth	mm	150
Flow range	L/min	110-180
Number of milling cutters		68
System pressure	Mpa	20
Type of milled roads		Asphalt
Material of cutters		42CrMo



Four-in-one bucket

Gross weight	kg	460
Bucket capacity	m <sup>3</sup>	0.48
Overall width	mm	1889
Stretching spacing	mm	718
System pressure	Mpa	20
Clamping force	KN	8.2



Vibrating compactor

Wheel diameter	mm	530
Wheel width	mm	1220
Weight	kg	763
Vibrating force	KN	26
Vibrating speed	Vpm	2600



Continuous ditcher

Digging depth	mm	1200
Digging width	mm	120
Digging speed	m/min	7
Weight	kg	524



Manhole cover planer

Operating weight	Kg	900
Recommended flow	L/min	60-120
Working pressure	MPa	20
Motor displacement	ML/r	1250
Maximum torque output	Nm	4000
Cutting radius	mm	600-750
Number of cutters	pcs	12
Output speed.	r	50-95
Transport sizes	mm	1400x1200x1500



Digger (With outriggers)

Maximum digging depth	mm	2191
Maximum working height	mm	2750
Working radius	mm	2883
Bucket capacity	m <sup>3</sup>	0.04
Gross weight	kg	560
Number of control joysticks		4



Breaking hammer

Operating weight	kg	564
Overall length	mm	1680
Working oil pressure	bar	110-140
Flow range	L/min	40-70
Brand of hammer core		Soosan
Impact frequency	Bpm	500-900
Shank diameter	mm	68
Impact energy	J	700
Pipeline size	mm	2800



Forks

Adjustable fork spacing (max)	mm	1524
Adjustable fork spacing (min)	mm	230
Gross weight	kg	207



Bulldozing plate

Overall length	mm	910
Overall width	mm	1524
Overall height	mm	627



Twist drill

Maximum drilling diameter	mm	400/600
Required flow of motor	L/min	60-80

## Safe and Comfortable Operating Environment

- The ROPS&FOPS cab and the seat belt, bumper, fire extinguisher, and safety hammer equipped guarantee the personal safety of the operator.
- The cab features large space, adjustable seats, and comfortable operations.
- The joysticks and the instrument panel are arranged in accordance with ergonomic principles so that the driver can always maintain the best comfort to make operations easier.
- The standard double-accelerator control model can use the pedal accelerator or work at preset constant power to save the operation labor.



## Convenient Maintenances

- The cab can be tilted backward for a large angle to make the repair and maintenance portions more accessible.
- The rear hood and upper hood can be opened conveniently and all units and pipelines are easily accessible to save the repair and maintenance labor and time.



## The main parameters

Description	Specifications	Unit
	XC760K	
Engine Model	YUCHAI	
Rated power/speed	55.8/2400	kw/rpm
Bucket capacity	0.6	m <sup>3</sup>
Rated load	1150	kg
Operating weight	3650	kg
Dumping clearance	2450	mm
Dumping reach	570	mm
Max.travel speed	12.5	km/h
Front turning radius without bucket	1320	mm
Front turning radius with bucket	2230	mm
Ground clearance	205	mm
Diesel fuel tank capacity	95	L
Tire model	12-16.5	
Overall dimensions(LxWxH)	3750×2000×1960	mm

Structure and specification are subject to change without notice. In case there is any difference between the description of the machine and the substantial machine, the substantial machine should govern.