



徐工徐工 助您成功
XCMG FOR YOUR SUCCESS

XC6-3507K /XC6-3514K 伸缩臂叉装机

Telescopic Handlers



Machmall.com

Web: machmall.com
Tel: +86-516 8773 9797
E: machmall@xcmg.com

XC6

产品简介

Product overview

- XC6伸缩臂叉装机是徐工集团经广泛市场及技术调研而自主开发设计的一种新型伸缩臂叉装机。该机型结构紧凑、操纵灵活、举升灵敏、自动调平，集稳定性与高工效于一身，适合于多种物料搬运环境。荣获国家级新产品称号和机械工业科学技术进步奖，连续八年引领中国伸缩臂叉装机行业出口和国内高端市场。
XC6 telescopic handler is a new telescopic handler independently developed and designed by XCMG through extensive market and technological research. This model features compact structure, flexible operation, sensitive lifting, automatic leveling, stability and high efficiency, and is applicable to various material handling environments. It has gained the title of national new product, won the mechanical industry science and technology progress award, and led the export of Chinese telescopic handler industry and the domestic high-end market for eight consecutive years.

机型特点

Characteristics

- 全景驾驶室，徐工视觉识别外观设计，时尚美观；
The panoramic cab and the XCMG's visual identity appearance design feature good fashion and elegance.
- 增压柴油机，动力性好，扭矩储备大，经济性好、燃油消耗和机油消耗低，是专门针对工程机械作业工况精心设计制造并经过验证的优质产品；
The supercharged diesel engine, featuring great power, high torque reserve, good economical efficiency, low fuel consumption and low engine oil consumption, is a quality product designed, manufactured and verified dedicatedly for working conditions of construction machinery.
- 动力系统采用双向减振技术，全方位弹性悬挂，有效克服动力系统与车架之间的共振，降低噪音及动力系统的疲劳破坏；
Bidirectional vibration damping technology and omni-directional elastic suspension are used for the power system to effectively overcome the resonance between the power system and the frame and reduce noise and fatigue damage to the power system.
- 变速箱，前2后2档位设置，操控方便，可靠、耐用。
The transmission is provided with 2 drive gears and 2 reverse gears for convenient control, and is reliable and durable.
- 免维护多片湿式制动桥，弹簧制动，液压释放，环境适应性强，全封闭湿式制动，免维护。
The maintenance-free multi-disc wet brake axle features spring braking, hydraulic release, strong environmental adaptability, fully closed wet braking and no maintenance.
- 四轮驱动，两轮、四轮及蟹行多种转向模式，具备超强越野能力，适应不同施工场合；
The four-wheel drive and multiple steering modes (including four-wheel, two-wheel, and crab steering-modes) realize super-strong off-road capability and adapt to diversified working conditions.
- 具备车架调平功能(XC6-3514K)，场地适应能力强，满足多种工况作业需求；
The frame leveling function equipped (XC6-3514K) realizes powerful site adaptability and meets the needs of diversified working conditions.

- 应用微动寸进控制技术、专用超载控制系统,作业安全可靠；
The inching control technology and special overload control system are applied to achieve high operationsafety and reliability.
- 可配置高空作业平台、铲斗、包夹等多种机具，满足用户个性化需求。
This machine can be equipped with diversified attachments, including aerial platform, bucket, and baleclamp, to meet the users' individual needs.

行业地位

Industry position

- 中国伸缩臂叉装机领跑者。
Leader of China's telescopic forklift loaders.
- 中国伸缩臂叉装机行业标准制定者。
Standard setter in China's telescopic forklift loader industry.

性能卓越 作业高效 绿色节能

Outstanding performance, high efficiency, and excellent environmental-friendliness

- 采用德国进口原装泵和马达用于闭式静液压驱动系统，操作简单，响应快，操作平稳，传动效率高，油耗低，可承受较大负载，制动时基本无需机械制动。
The original pump and motor imported from Germany are used in the closed hydrostatic drive system. They feature simple operation, quick response, stable operation, high drive efficiency, low oil consumption and great load bearing capacity, and can ensure basically no mechanical braking.system automatically adapts to high speed driving condition and low-speed working condition.



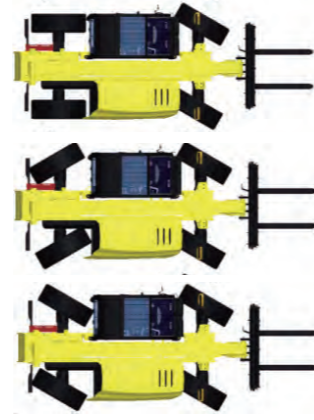
- 微动寸进控制技术，达到厘米级行驶控制。
The inching control technology achieves centimeter-level driving control.



XC6

灵活的转向控制模式: Flexible steering control modes

- 两轮转向: 一般工作及高速转场作业;
Two-wheel steering mode: For common operations and high-speed-site transfer.
- 四轮转向: 满足狭小空间作业。
Four-wheel steering mode: For operations in long and narrow spaces.
- 蟹行模式: 满足斜向狭长空间作业。
Crab steering mode: For operations in slanted long and narrow spaces



超强结构 坚固可靠 Super strong structure and reliability

- XC6伸缩臂叉装机关键构件经过20万次疲劳载荷及超载试验, 确保满足各类恶劣工况。
The key components of XC6 telescopic handler have passed 200,000 fatigue load and overload tests, ensuring meeting various severe conditions.



XC6-4517K叉装机通过20万次疲劳载荷及超载试验
XC6-4517K has passed fatigue load and overload tests of 200,000 times

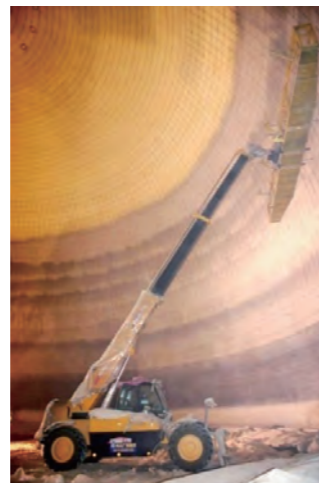
全面适应各种工况 Meets various working conditions.



XC6-4517K叉装机助阵中法建交50周年庆祝活动
XC6-4517K telescopic handler backing at the 50 anniversary of diplomatic ties between China and France



XC6-3514K 叉装机加蓬某工地施工作业
XC6-3514K telescopic handler working on a construction site in Gabon



XC6-3507K 抱夹草包装车
XC6-3507K Holding grass packing



XC6-4517K 叉装机参加保定某电厂建设
XC6-4517K telescopic handler in a power plant construction in Baoding, Hebei

环境舒适 操作简便 Comfort drive and easy operation

- 豪华型全景空调驾驶室, 视野开阔, 隔音、隔热、减震, 造型美观, 操作舒适。司机耳旁噪音低;
The luxurious panoramic cab with A/C provides wide vision, has favorable NVH performance and heat insulation. It is quite comfortable to operate in the cab. The noise near the driver's ears is low.
- 操控系统、仪表开关、操纵杆、座椅均按照人体工程学原理布置, 操纵杆、按钮开关触手可及, 驾驶人员一直保持最佳舒适度, 作业更轻松。
The control system, instrument switch, control lever and seat are arranged ergonomically. With control lever and button switch within reach, the driver can operate easily always with the optimal comfort level.
- 配备收音机、储物格、水杯座、点烟器、电风扇、应急锤、灭火器、防滑地板、配前、后、顶雨刮器, 充分体现人性化设计理念。
The provision of radio, storage box, cup holder, cigar lighter, fan, life hammer, fire extinguisher, abrasive floor and front, rear and roof wipers can fully reflect the humanized design concept.
- 先导操纵工作液压系统, 操纵轻松自如, 降低了司机的工作强度。
The pilot control hydraulic system makes control easy and reduces the working intensity of the driver.



XC6

智能科技 作业安全

Intelligent technology and high operation safety

- 专用超载控制系统，作业情况实时监控，具备声光报警及超载安全保护功能，安全可靠。
The special overload control system real-time monitors the operation situation and the sound-light alarm and overload safety protection function are provided to ensure high safety and reliability.
- 货叉调平采用流量自动补偿技术，实现动臂在变幅过程中，自动控制货叉水平，保证高位叉举的稳定和安全。
The fork leveling system adopts the automatic flow compensation technology to automatically control the levelness of forks during the luffing of the boom, in order to guarantee the forklifting stability and safety in heights.
- 具备车架调平功能(XC6-3514K)，场地适应能力强，确保在不同工况整车水平，作业安全。
The frame leveling function equipped (XC6-3514K) maintains the levelness of the machine under diversified working conditions, featuring powerful site adaptability and high operation safety.



维护方便

Convenient maintenances

- 各种油位检查、油液添加及润滑脂加注等保养点均布置在易于接近的部位，空滤器滤芯、电气设备等的检修拆换均可方便进行；
The fan is provided with automatic reversing and dedusting control system to timely and effective clean the radiator, featuring good labor and time saving.
侧翻式大开启机罩设计，发动机机油滤、柴油滤、空滤等可进行“一站式”维护保养；
With design of side-turning large-opening hood, "one-stop" maintenance can be fulfilled for the engine oil filter, diesel filter, and air filter.
- 并联结构集成式保险丝盒，集中控制，故障排查便利、高效。
The integrated fuse case in parallel connection structure features centralized control and convenient and efficiency troubleshooting.



主要参数

Main parameter

项目Item	参数Parameters			单位unit
	XC6-3507K	XC6-3514K		
品牌 Brand	潍柴国II Weichai China II	大连道依茨国III Dalian Deutz China III	潍柴国II Weichai China II	/
型号 Model	WP4G95E221	BF4M2012-10T3R/4	WP4G95E221	/
额定功率 Rated power	70	74.9	70	KW
额定转速 Rated speed	2200r/min	2300r/min	2200r/min	r/min
额定载荷 Rated operating load	3500	3500		kg
工作质量 Operating Mass	7850	10500		kg
最大起升高度(至货叉上平面) Maximum lifting height (to upper plane of fork)	7150	13700		mm
最大起升高度时的有效载荷 Effective load at the maximum lifting height	2000	3100		kg
最大前伸距(臂水平，载荷中心至轮胎前端) Maximum reach distance (arm level, load center to front end of tire)	3600	9600		mm
最大前伸距时的有效载荷 Effective load at the maximum reach distance	1250	635		kg
载荷中心距 Load center distance	600	600		mm
最小离地间隙 Minimum ground clearance	400	370		mm
伸缩臂变幅范围 Amplitude range of telescopic boom	-3°~65°	-4°~73°		°
货叉架倾角范围(臂水平) Range of inclination angle of fork arm carrier (arm level)	-17.5°~90°	-18°~90°		°
最高速度 Maximum speed	30	30		km/h
轮胎规格 Tire specification	16/70-24-14PR	15.5-25-16PR		
轴距 Wheelbase	2985	2980	3250	mm
轮距 Tread	1840	2060	1970	mm
最小转弯半径(轮胎外侧) Minimum turning radius (tire outside)	≤3880	4750	4238	mm
最大牵引力 Maximum traction	≥70	55	70	kN
制动距离 Braking distance	≤12.5	8	8.3	m
整机外形尺寸 Overall dimensions of the whole set	5065×2250×2470	6380×2500×2740	6291×2500×2600	mm