

HB47V

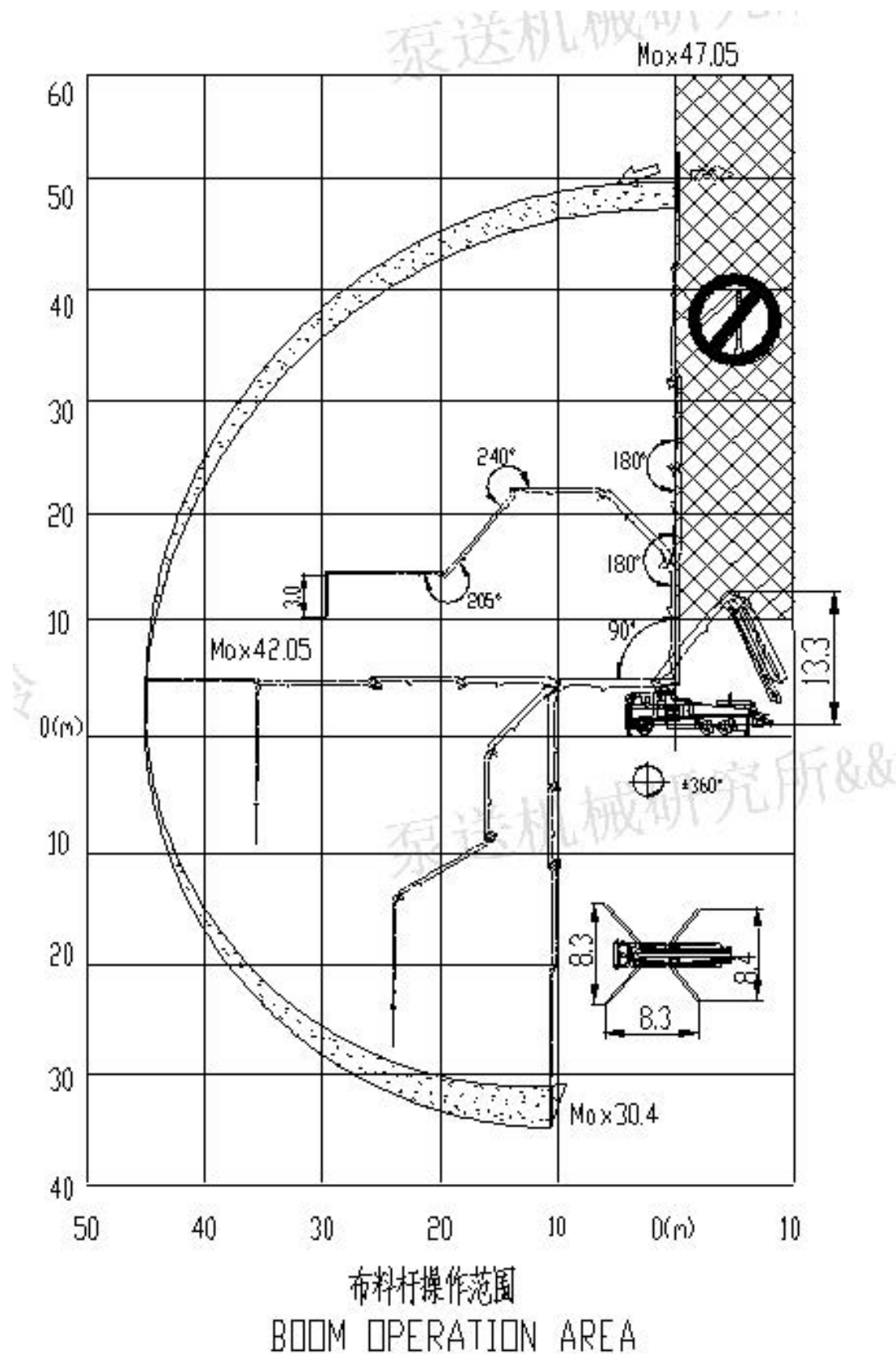
Truck-mounted Concrete Boom Pump



Main Features

- Assembly on standard 3 axles chassis
- 5 sections placing boom, "RZ" folding system, FEM designed
- Fully hydraulic outrigger controls on both sides of the truck
- Front X-type outriggers and swing-out rear outriggers
- Pumping unit with open hydraulic circuit
- Fully-hydraulic switch over system
- MPS (Micro Pressure Shock) reversing buffering technology
- ROCK valve/S valve
- Large diameter slide valve with casting oil passage
- Intelligent electrical control system
- Remote / Manual control method for boom and pumping unit
- Centralized lubrication system for pumping unit
- Piston automatic return technology, easy to replace piston
- Main hydraulic pump overload protection technology
- Engine overload protection technology
- Engine low-speed protection technology
- Anti-tipping safety protection technology
- Lights system

Operation range



Main technical parameters

1. Pumping unit technical data

| Item | | Parameters |
|--------------------------------------|-------------------|--------------------|
| Theoretical output | m ³ /h | 180 |
| Delivery pressure | MPa | 10.2 |
| Maximum aggregate diameter | mm | ≤40 |
| Concrete cylinder(Diameter × stroke) | mm | Φ260×2000 |
| Filling height | mm | 1580 |
| Hopper capacity | L | 650 |
| Hydraulic circuit | | Open |
| Transfer tube | | Rock Valve/S Valve |

2. Placing boom technical data

| Item | | Parameters |
|--|----------------------------------|------------|
| Max. vertical reach | m | 47.05 |
| Max. horizontal distance (from center of slewing axis) | m | 42.05 |
| Reach depth | m | 30.4 |
| Pipeline diameter | | 5 |
| 1 st section unfolding angle | | 90° |
| 2 nd section unfolding angle | | 180° |
| 3 rd section unfolding angle | | 180° |
| 4 th section unfolding angle | | 240° |
| 5 th section unfolding angle | | 250° |
| Rotating angle of the placing boom | | ±360° |
| Stabilizer span | Longitudinal span | mm 8300 |
| | Front stabilizer transverse span | mm 8300 |
| | Rear stabilizer transverse span | mm 8400 |

3. Technical data for travel

| | |
|----------------------------|-------------------------|
| Chassis brand | Sinotruk |
| Chassis model | ZZ5347V524HE1 |
| Overall dimensions (L×W×H) | 12300×2540×4000 |
| Overall weight | 33370kg |
| Axle numbers | 3 |
| Wheelbase | 4800+1400 mm |
| Tire | 385/65R22.5、315/80R22.5 |
| Engine Model | MC11.44-50 |
| Max. Power | 324kw |
| Displacement of Engine | 10.518L |
| Emission standard | Euro V |

Technical data and characteristics subject to modifications without notice