

HB43V

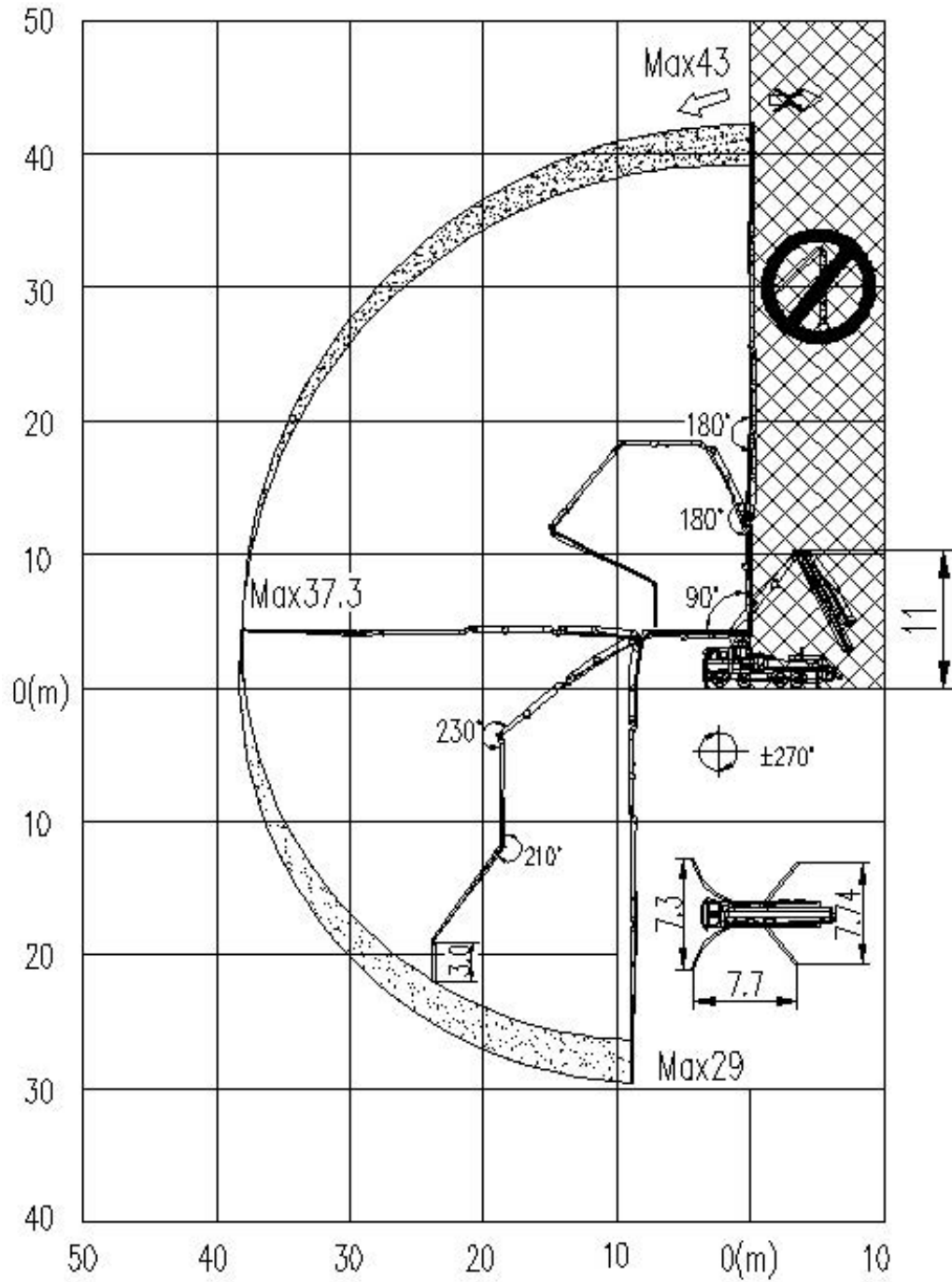
Truck-mounted Concrete Boom Pump



Main Features

- Assembly on standard 3 axles chassis
- 5 sections placing boom, "RZ" folding system, FEM designed
- Hydraulic outrigger controls on both sides of the truck
- Automatic compensation of wear ring
- Front C-sharped outriggers and swing-out rear outriggers
- Pumping unit with open hydraulic circuit
- Electronic control reversing open system technology
- Fusion German SCHWING pumping hydraulic reversing buffer control technology
- S / Rock valve transfer tube
- Large diameter slide valve with casting oil passage
- Intelligent electrical control system
- Remote / Manual control method for boom and pumping unit
- Centralized lubrication system for pumping unit
- Piston automatic return technology, easy to replace piston
- Main hydraulic pump overload protection technology
- Engine overload protection technology
- Engine low-speed protection technology
- Anti-tipping safety protection technology
- Automatic mixing switchover technology

Operation range



Main technical parameters

1. Pumping unit technical data

Items		Parameters
Theoretical output	m ³ /h	130
Delivery pressure	MPa	8
Maximum aggregate diameter	mm	≤40
Concrete cylinder(diameter×stroke)	mm	Φ230×1600
Filling height	mm	1560
Hopper capacity	L	650
Hydraulic circuit		Open
Transfer tube		S valve / Rock Valve
Concrete slump	mm	80-230
Maximum tube swing time per min		23-26

2. Placing boom technical data

Items		Parameters
Max. vertical reach	m	43
Max. horizontal distance (from center of slewing axis)	m	37.3
Reach depth	m	29
Pipeline diameter	mm	125
Section numbers		5
1 st section unfolding angle		90°
2 nd section unfolding angle		180°
3 rd section unfolding angle		180°
4 th section unfolding angle		230°
5 th section unfolding angle		210°
Rotating angle of the placing boom		±270°
Stabilizer span	Longitudinal span	mm
		7700

	Front stabilizer transverse span	mm	7300
	Rear stabilizer transverse span	mm	7740

3. Technical data for travel

Chassis brand	Sinotruk
Chassis model	ZZ5347V524HE1
Overall dimensions (L×W×H)	11260×2540×4000
Overall weight	31000kg
Axle numbers	3
Wheelbase	4800+1400 mm
Tire	385/65R22.5、 315/80R22.5
Engine Model	MC11.44-50
Max. Power	297kw
Displacement of Engine	10.518L
Emission standard	Euro V

Technical data and characteristics subject to modifications without notice