

# HB37V

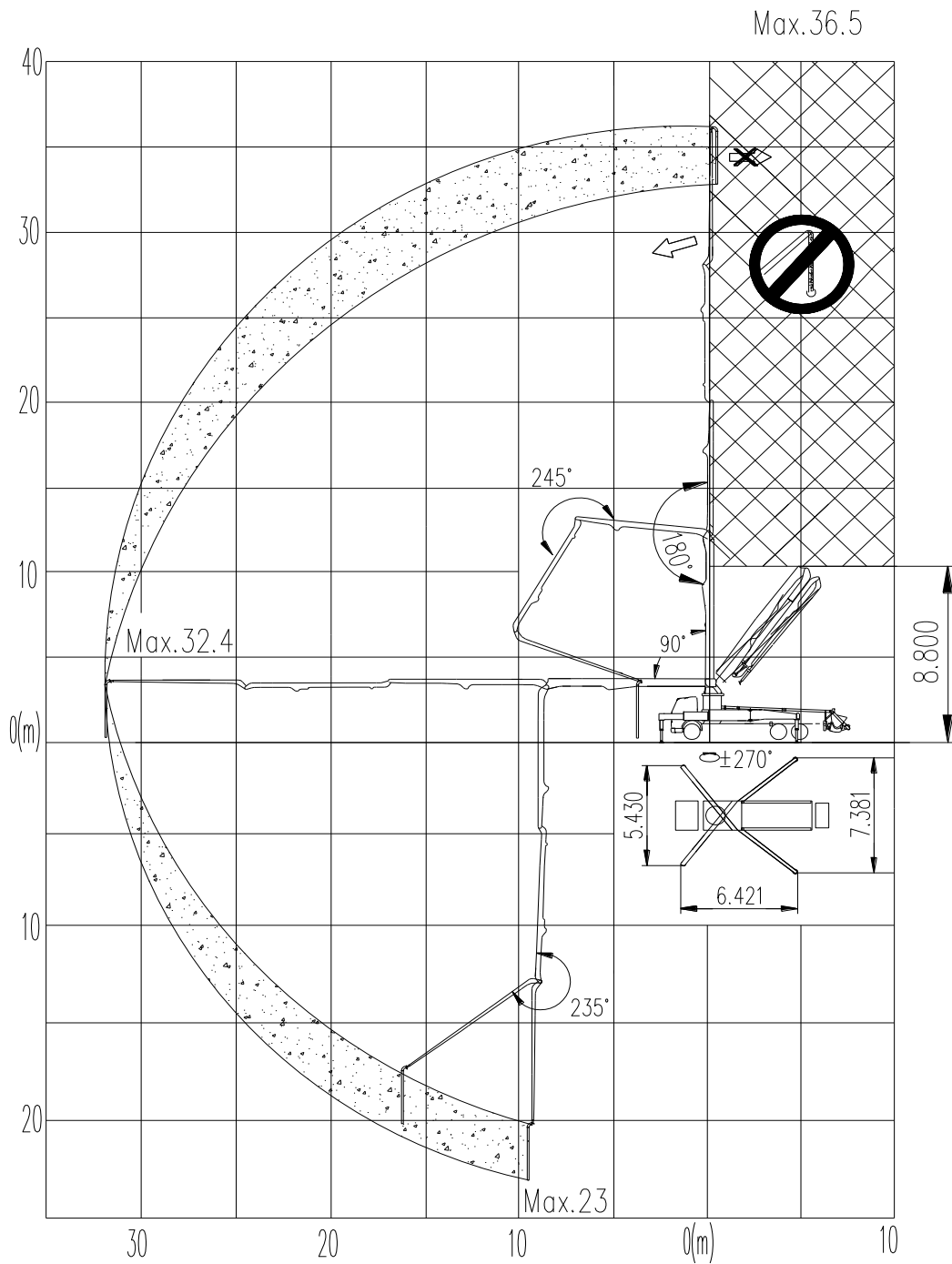
## Truck-mounted Concrete Boom Pump



## Main Features

- Assembly on standard 3 axles chassis
- 4 sections placing boom, "Z" folding system, FEM designed
- Fully hydraulic outrigger controls on both sides of the truck
- Front X-type outriggers and swing-out rear outriggers
- Pumping unit with open hydraulic circuit
- Fully-hydraulic switch over system
- MPS (Micro Pressure Shock) reversing buffering technology
- S/ROCK valve
- Large diameter slide valve with casting oil passage
- Intelligent electrical control system
- Remote / Manual control method for boom and pumping unit
- Centralized lubrication system for pumping unit
- Piston automatic return technology, easy to replace piston
- Main hydraulic pump overload protection technology
- Engine overload protection technology
- Engine low-speed protection technology
- Anti-tipping safety protection technology
- Lights system

# Operation range



# Main technical parameters

## 1. Pumping unit technical data

Item		Parameters
Theoretical output	m <sup>3</sup> /h	130
Delivery pressure	MPa	8
Maximum aggregate diameter	mm	≤40
Concrete cylinder(Diameter × stroke)	mm	Φ230×2000
Filling height	mm	1580
Hopper capacity	L	600
Hydraulic circuit		Open
Transfer tube		Rock Valve/S Valve

## 2. Placing boom technical data

Item		Parameters	
Max. vertical reach	m	36.5	
Max. horizontal distance (from center of slewing axis)	m	32.4	
Reach depth	m	23	
Pipeline diameter	mm	125	
Section numbers		4	
1 <sup>st</sup> section unfolding angle		90°	
2 <sup>nd</sup> section unfolding angle		180°	
3 <sup>rd</sup> section unfolding angle		245°	
4 <sup>th</sup> section unfolding angle		235°	
Rotating angle of the placing boom		±270°	
Stabilizer span	Longitudinal span	mm	6421
	Front stabilizer transverse span	mm	5430
	Rear stabilizer transverse span	mm	7381

### 3. Technical data for travel

Chassis brand	<b>Sinotruk</b>
Chassis model	ZZ5347V524HE1
Overall dimensions (L×W×H)	12000×2500×3810
Overall weight	24370kg
Axle numbers	3
Wheelbase	4800+1350 mm
Tire	385/65R22.5、 315/80R22.5
Engine Model	MC11.44-50
Max. Power	297kw
Displacement of Engine	10.518L
Emission standard	Euro V

---

*Technical data and characteristics subject to modifications without notice*